

# MONTHLY MEMBERSHIP PROGRESS REPORT

LOCATION IOWA

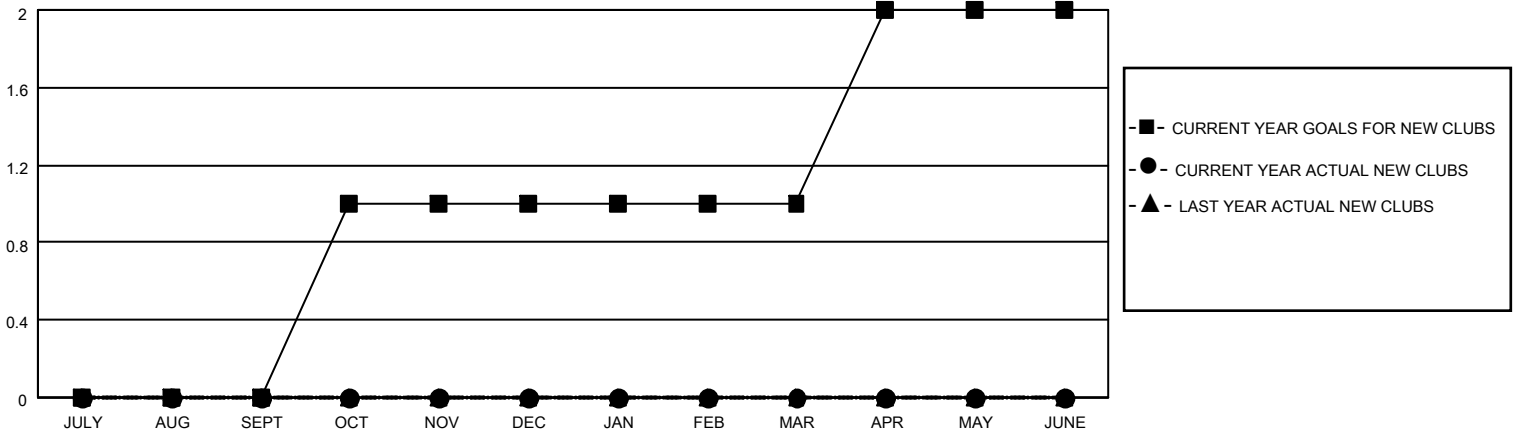
District 9 NE

Results as of: 1/31/2021

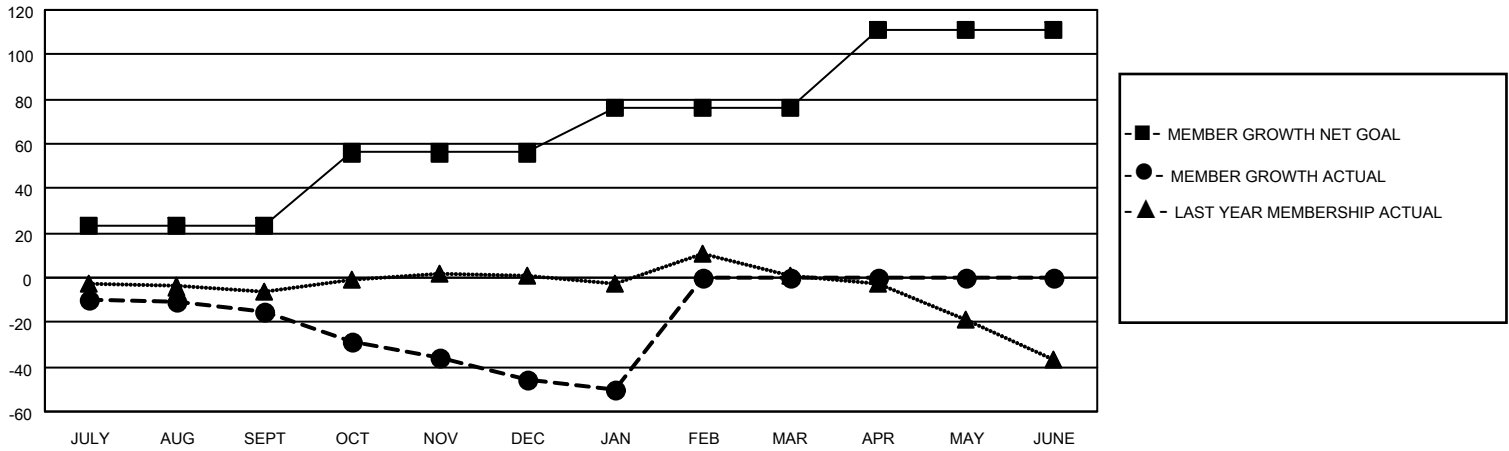
Clubs			
RESULTS FOR 2020-2021			
QUARTER	NEW CLUB GOAL	NEW CLUBS	DROPPED CLUBS
JULY/AUG/SEPT	0	0	0
OCT/NOV/DEC	1	0	0
JAN/FEB/MAR	0	0	1
APR/MAY/JUNE	1	0	0

Members			
RESULTS FOR 2020-2021			
QUARTER	MEMBER GROWTH NET GOAL	MEMBER GROWTH ACTUAL	DROPPED MEMBERS ACTUAL (including transfers)
JULY/AUG/SEPT	23	24	39
OCT/NOV/DEC	33	17	46
JAN/FEB/MAR	20	8	12
APR/MAY/JUNE	35	0	0

**GOALS AND ACTUAL NEW CLUBS CUMULATIVE**



**GOALS AND ACTUAL MEMBERS CUMULATIVE**



**DROPPED CLUBS: 1**

19 CLUBS OF 46 ADDED 1 OR MORE NEW MEMBERS

**GENDER DISTRIBUTION**

MALE 1,005 (77.97%)  
FEMALE 284 (22.03%)

**DROPPED MEMBERS**

DECEASED	12
CLUB CANCELLED	0
OTHER	85
<b>TOTAL</b>	<b>97</b>

[CLICK HERE FOR CUMULATIVE MEMBERSHIP DATA](#)

TOTAL FAMILY UNIT MEMBERS	153
FAMILY MEMBERS PAYING HALF DUES	77